

# MEAT PENS 101 & 202

## ORDERING YOUR RABBITS:

Find your breeder by using the internet or FaceBook and referrals.

When you find a breeder, ask certain questions:

1. How do your rabbits do at shows?
2. Have you ever had health problems?
3. How did you take care of health problems?

If you have a breeder that brags about what they've won then they probably are in it for themselves and not your kids. I brag on what my kids have won & not myself. Ask if this is their lively hood. Most of us do this for the love of helping kids and raising good rabbits and not to make a living. There are only a few that can and have the heart for this.

Always order early so a breeder can plan for when their does can be bred. Always have your show date and validation info. Always use a breeder that will help if you call and need help!!

## FEEDING:

Always try and feed what your breeder uses. If you can't get it, see if they will supply you with some until you can change over. If you need to change them, mix it ½ & ½ until gone. Always feed as fresh a feed as you can. Check the mill date on bags. If over 2 months old, the rabbits will not get the vitamins utilized in it.

## FEEDS THAT I LIKE ARE:

- Pretrus
- Bluebonnet
- Pen Pals
- Purina
- Show Rite
- Rowe

I use between 16% - 17% on protein, which is perfect on Meat Pens. 18% will make the flesh loose and soft. We want hard, firm flesh. Some use a conditioning feed that's a mix of the following:

- 4 parts CR Oats
- 2 parts CR Barly
- 1 part Black Oil Sunflower Seeds
- 1 part Show Bloom.

## GENERAL CARE:

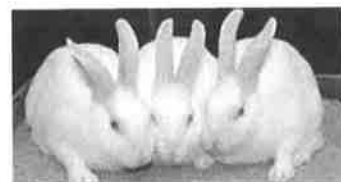
From the minute you pick up from your rabbit from the breeder, always transport in a wire floored cage with a pan. *Pet taxies are not ideal for these rabbits* - there isn't proper air flow and they end up standing in their own urine. Make sure you never transport in the bed of a truck; always inside a vehicle. So when you get home, they need as little contact as possible so to help ease the stress they have. When you get rabbits, they should be 5 - 5.5 weeks of age and in a very stressful way. *Give them hay and probiotics daily for the first 7-10 days.* I use Rowe Nutrition Pro Defend Powder. This is the best I've found, and has the most active live good bacteria on the Market. They also make a pellet that's called Pro Defend that is good. A good handful of grass hay, not alfalfa, is very good to give as a roughage, that helps with stress as well.

## WEIGHING:

Some people weigh rabbits way too much. *Leave them alone for the first two weeks.* The first weeks you have them is when you will see health issues. I don't like to weigh until the last 10 days before the show, then weigh them everyday to track where they are as far as keeping them close together.

## SHOW PREP:

The object of prep is to have rabbits clean with no stains and are in condition. Proper condition begins with from day one. Animals that aren't in condition are weak in flesh, boney, have dull fur and unfinished fur. Working the fur with corn starch and water will give a good slick texture of coat. Water and the natural oils on your hands, to me, is the BEST. IF using corn starch, NEVER use the day of show. You may get disqualified for a false slickness.



## Annual Southern Classic Meatpen and Single Fryer Show

Location: Bell County Expo Center, Belton, Tx

Double Specialty: Californian and New Zealand

# May 9, 2020



### Contact Information:

Jason Platt - [jplattcals@yahoo.com](mailto:jplattcals@yahoo.com)

Don Mersiovsky - [lepus@hot.rr.com](mailto:lepus@hot.rr.com)

Mail Entries To: 1156 Elm Grove Spur, Belton, TX

76513 Deadline Postmarked by: May 1, 2020

Make checks payable to: Southern Meat Pen Classic

Entry Fee \$20 Per Meat Pen, \$10 Single Fryers

Unlimited Entries 3.5 -5.5 Pound limit

Plan your breed date of  
Jan 30, 2020

All Meat classes will show in breeds separately. (Californians, New Zealands, & All other Breeds) Top 5 placings in each class winners will compete for Grand and Reserve Grand Overall

### Youth Show Meat Pens and Single Fryers:

Buckles for Overall Grand and Reserve.  
\$3500 in Prize money paid to overall  
top 5 placings.

(Californians, New Zealands, & All Other Breeds)  
1st through 5th in each breed class will compete for top five overall to include  
Grand and Reserve Grand Champion.

### Open Show Meat Pens and Single Fryers:

Prizes: Percentage prize money paid to  
overall top 5 placings based on number of  
entries

All open meat classes will show in breeds separately.  
(Californians, New Zealands, & All other Breeds)  
Class winners will compete for Grand and Reserve Grand Overall

Judges: Josh Humphries - TN, Carrol Hooks - NC

Specialty Shows: Scott Rodriguez - WY, Rusty Westhoff, TN

 Follow us: Southern Classic Crsc <http://scmeatpen.wixsite.com/rabbitshow>

# 3P RABBITRY MEAT PENS - SHOW RABBITS

WE SELL MEAT PEN & BROOD STOCK YEAR ROUND.

JPLATTCALS@YAHOO.COM - (512) 434-9525



**THIS IS WHAT OUR RABBITS DO.....WIN !!**

Here at 3P Rabbitry we support FFA & 4H students and their projects and strive for the best and healthiest rabbits on the market today. We have proudly been serving 4H & FFA youngsters for over 14 years and our track record speaks for itself.

We have raised and sold many county, regional, state and national winners, with meatpens and show rabbits for the ARBA shows.

For your meatpen & single fryer needs, we can provide the highest quality Californians and Black New Zealands to individuals or school district shows.

We breed year round to fulfill your rabbit needs.

Please contact early due to a high volume of orders

Jason Platt

512-434-9525

jplattcals@yahoo.com

 3P Rabbitry  Jason Platt

www.3prabbitry.com

